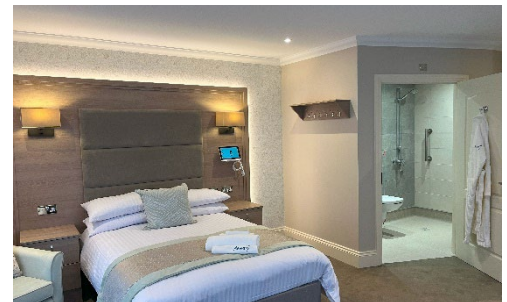


HEALTHCARE

Braintree Mews Care Home, Braintree



The project involved the construction of a 75-bedroom care facility for Avery Healthcare with a traditional building structure. The primary construction materials included reinforced concrete foundations for the load-bearing walls and traditional brick and block masonry for the exterior finishes. The floors were constructed using reinforced concrete planks for added strength and durability. Additionally, the roofing system featured a Sika Trocal flat roof, a reliable and high-performance roofing membrane known for its longevity and waterproofing capabilities.

The project had to adhere to industry standards and regulations to ensure the highest quality in construction and safety for the residents and staff. The combination of reinforced concrete, traditional brick and block, and Sika Trocal roofing will result in a well-constructed, long-lasting care facility that will serve the community for years to come.

Facilities include a cinema, a library, private dining areas, hairdressers, spa room and activity rooms.

- 📄 Location: Braintree, Essex
- 📄 Client: Avery Healthcare
- 📄 Architect: Harris Irwin
- 📄 Project Manage: Holden & Lee
- 📄 Project Value: £8.3m